



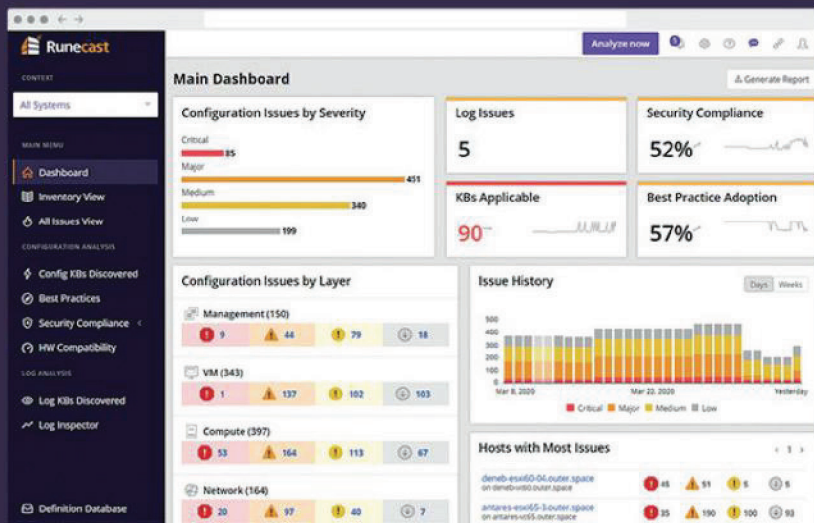
Runecast

Value-Added Distributor
OTD BİLİŞİM
www.onlineteknikdestek.com



Take control of your VMware SDDC & AWS Cloud. Avoid outages, mitigate risks, be security compliant.

Mitigate configuration issues and security risks with a single platform for real-time, automated VMware and AWS insights: **Runecast Analyzer**



**ENTERPRISE CONSOLE
NOW AVAILABLE**

ENDORSED BY OUR CUSTOMERS

"We found out that there were a few ongoing issues in the environment that eventually brought our systems down. The troubleshooting took too long because we had to call VMware Support Center in many cases. Runecast Analyzer changed all that."

Henderson Alleyne

Director of Network Operations,
NCC Media



"Best 3rd party software for your vSphere environments"
IT Services Engineer

"A vital tool for maintaining uptime for your virtual environment"
Cloud Services Manager

ISSUE PREVENTION

Continuously checks configuration and logs against known issues, security standards, Hardware Compatibility Lists and Best Practices (e.g. VMware, AWS, and SAP HANA) to provide you insights to stabilize and secure your VMware + AWS infrastructure. Provides upgrade simulations and keeps historical data for all scans.

SECURITY COMPLIANCE

Evaluates your security compliance on VMware for CIS, NIST, PCI-DSS, DISA STIG, HIPAA & BSI – and on AWS for CIS, NIST & PCI DSS. Provides mapping of technical checks vs security controls and requirements, detailed historical data and option for automated remediation.

FULLY ON-PREM SECURE

Operates fully on-prem and even offline, to keep your data safely on-site.

BUILT BY ADMINS – FOR ADMINS

We live and breathe the VMware admin world every day, this has been our job for the last 15 years.

"We designed this platform so sysadmins never have to waste valuable time identifying, diagnosing or searching for error codes ever again"



Stanimir Markov

Runecast CEO, Co-Founder,
VCDX #74

Join thousands of happy admins who rely on Runecast Analyzer



SCANIA

verizon

Swedbank

NYC HEALTH+ HOSPITALS

avast





Runecast

Value-Added Distributor
OTD BİLİŞİM
www.onlineteknikdestek.com



Go to runecast.com/registration
or reach us at innovate@runecast.com

GET YOUR
**FREE
14-DAY
TRIAL!**

By the numbers

99%

Mitigate **99%**
of known issues,
proactively

85%

Reduce outage
downtime
by **85%**

98%

Find problems in **98%**
less time
(3x productivity)

95%

Automate
95% of security
compliance checks

Definition Database

Severity: Source: Applies to: Affects: Products (3):

Filters Applied: VPC x EC2 x IAM x Clear All

Severity	Source	Applies to	Affects	Products	Title
Critical	BP	Compute	Security	EC2	Ensure no security groups allow incoming connections from ALL ports and protocols
Major	BP	Management	Security	IAM	Password Policy must require at least one uppercase character
Major	BP	Compute	Recoverability	EC2	Enable termination protection for EC2 instances
Major	BP	Management	Security	IAM	Password Policy must require at least one lowercase character
Major	BP	Management	Security	IAM	Password Policy must require at least one number
Major	BP	Management	Security	IAM	Password Policy must require at least one symbol
Major	BP	Management	Security	IAM	Password policy must prevent reuse of previously used passwords
Major	BP	Management	Security	IAM	Password policy must require rotation every 90 days
Major	BP	Management	Security	IAM	Password Policy must require a minimum length of 14
Major	BP	Management	Security	IAM	Enable MFA for console login
Major	BP	Compute	Security	EC2	Ensure no security groups allow incoming connections from to SSH (TCP:22)
Major	BP	Compute	Security	EC2	Ensure no security groups allow incoming connections from to RDP (TCP:3389)
Medium	BP	Management	Security	VPC	Ensure VPC flow logging is enabled in all VPCs
Medium	BP	Network	Security	VPC	Ensure the default security group of every VPC restricts all traffic
Medium	BP	Management	Security	IAM	Credentials with password enabled, unused for 90 days should be disabled
Medium	BP	Management	Manageability	IAM	Use Groups to Assign Permissions to IAM Users
Medium	BP	Compute	Recoverability	EC2	Consider EBS-backed instances as cool-down storage

HOW IT WORKS

- Connect all your vCenters and AWS API to a single, lightweight Runecast Analyzer virtual appliance and take control **from a single dashboard**.
- Runecast Analyzer engine has fully offline capabilities and can even be **upgraded in offline mode**.
- Its **patented rules engine** uses Artificial Intelligence (AI) and Natural Language Processing (NLP) to **automatically discover misconfigurations** in your environment that can cause failed security audits or trigger outages.

RUNECAST ADDS VALUE & STABILITY TO VMWARE & AWS HYBRID CLOUD

Runecast Analyzer helps teams to stabilize availability and ensure security compliance. Our customers often report ROI from the very first scan.

FULL VISIBILITY OVER YOUR HYBRID CLOUD

Runecast helps teams with a simpler transition to AWS, enabling admins to fully understand their hybrid environments. Running securely on-prem, it provides insights into what is happening both in the cloud and on-site.

SUPPORTED SERVICES

- VMware vSphere, vSAN, NSX, Horizon
- VMware Cloud on AWS
- AWS Cloud

- Gain **real-time** operational and security insights
- Monitor, secure and troubleshoot** your VMware and AWS infrastructures
- See the future** with upgrade simulations and the past with detailed history
- Easy OVA deployment** – up and running in minutes
- Offline repository** limits exposing the internal network to the internet
- Routinely updates** as soon as new issues or standards are released

